

拡大図
1/500

145-29

300-6

②

④

⑥

144-2



146-77

①

③

⑤

⑦

⑧

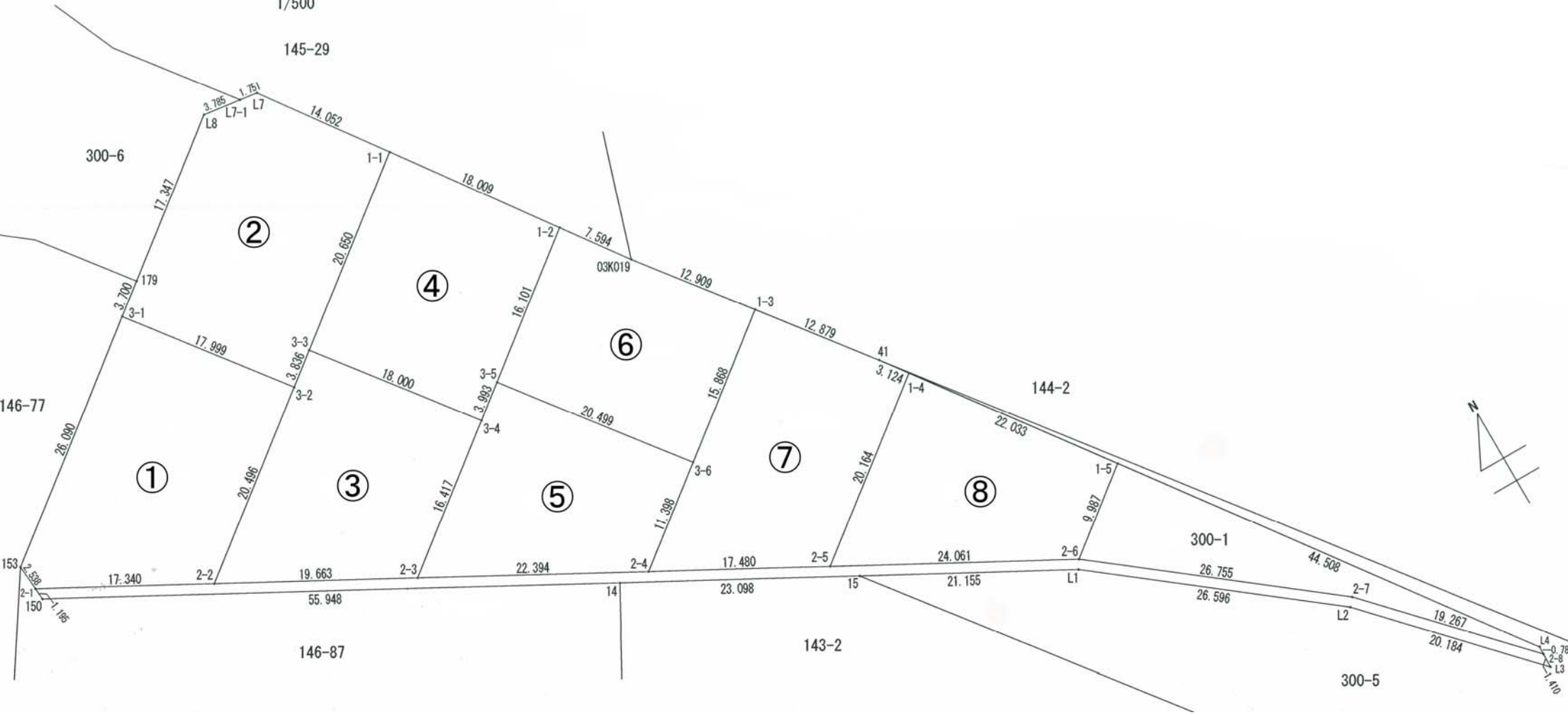
300-1

153

146-87

143-2

300-5



3.785 1.751
L8 L7-1 L7

14.052

179

17.999

3.836

3-3

3-2

18.000

3.993

3-5

3-4

20.499

15.868

3-6

20.164

1-4

22.033

9.987

1-5

44.508

2-7

19.267

20.184

L4

L3

L2

L1

1.410

17.340

2-2

19.663

2-3

22.394

2-4

17.480

2-5

24.061

2-6

26.755

26.596

L1

15

21.155

14

23.098

15

17.480

2-5

21.155

L1

15

23.098

15

17.480

2-5

21.155

L1

15

2.338

2-1

1.195

150

26.090

17.347

3.700

3-1

179

20.496

3-2

16.417

3-4

11.398

3-6

20.164

1-4

22.033

9.987

1-5

44.508

2-7

19.267

20.184

L4

L3

L2

L1

1.410

17.347

3.700

179

20.496

3-2

16.417

3-4

11.398

3-6

20.164

1-4

22.033

9.987

1-5

44.508

2-7

19.267

20.184

L4

L3

L2

L1

1.410

3.785

L8

L7-1

L7

1.751

14.052

18.009

1-1

7.594

03K019

12.909

1-2

12.879

1-3

41

3.124

1-4

22.033

9.987

1-5

44.508

2-7

19.267

20.184

L4

L3

L2

L1

1.410

17.347

3.700

179

20.496

3-2

16.417

3-4

11.398

3-6

20.164

1-4

22.033

9.987

1-5

44.508

2-7

19.267

20.184

L4

L3

L2

L1

1.410

17.347

3.700

179

20.496

3-2

16.417

3-4

11.398

3-6

20.164

1-4

22.033

9.987

1-5

44.508

2-7

19.267

20.184

L4

L3

L2

L1

1.410

17.347

3.700

179

20.496

3-2

16.417

3-4

11.398

3-6

20.164

1-4

22.033

9.987

1-5

44.508

2-7

19.267

20.184

L4

L3

L2

L1

1.410

17.347

3.700

179

20.496

3-2

16.417

3-4

11.398

3-6

20.164

1-4

22.033

9.987

1-5

44.508

2-7

19.267

20.184

L4

L3

L2

L1

1.410